

ECLIPSE AIR HEAT BURNERS

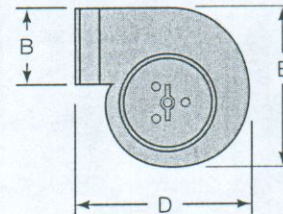
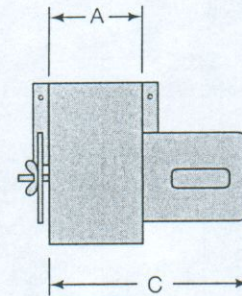
Accessories

Data 140-5

11/93

Combustion Air Blowers

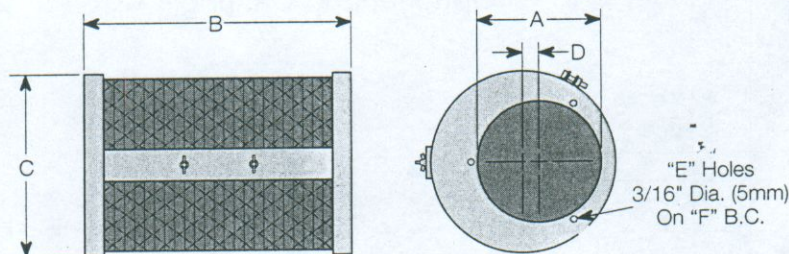
Blower Cat. No.	Assy. No.	Rotor No.	Capacity CFH	Static Press.* "w.c.	TEFC Motor 230/460/3/60		
					HP	RPM	Part No.
54-54S-1/3	109410	16328	20,000	1.90	1/3	3450	12109
65-84S-1/3	109241	16706	43,000	1.50	1/3	1750	12110
65-84S-1/2	109242	16706	60,950	0.95	1/2	1750	12111
66-94S-3/4	109243	10539-1	63,000	2.00	3/4	1750	11803
66-94S-1	109244	10539-2	78,000	1.50	1	1750	11819
67-114S-1-1/2	109232	12408	90,000	2.70	1-1/2	1750	11855
67-114S-2	109233	12408	118,000	1.50	2	1750	11311
67-115S-1-1/2	109139	12409	108,000	2.70	1-1/2	1750	11855
67-115S-2	109235	12409	121,000	2.00	2	1750	11311
78-126S-3	109140	14145	160,000	2.00	3	1750	14239
78-136S-5	109130	14147	195,000	2.40	5	1750	14240



* Additional capacity possible at reduced pressure. Static pressure measured at blower outlet using American Fan Association Standards.

Blower Catalog No.	Dimensions										Wt. Less Motor	
	A		B		C		D		E		Lbs.	Kg
	Inches	mm	Inches	mm	Inches	mm	Inches	mm	Inches	mm		
54-54S-1/3	4	102	4-1/8	105	12-1/4	311	8-5/16	211	8-5/8	219	6.4	3
65-84S-1/3	6-1/16	154	5-1/16	129	14-5/8	371	12-15/16	329	13-3/4	349	19.5	9
65-84S-1/2	6-1/16	154	5-1/16	129	15-1/8	384	12-15/16	329	13-3/4	349	19.5	9
66-94S-3/4	6-1/16	154	6-5/16	160	15-1/2	394	15	381	15-1/2	394	23.8	11
66-94S-1	6-1/16	154	6-5/16	160	16-5/8	422	15	381	15-1/2	394	24.0	11
67-114S-1-1/2	6-1/4	159	7-1/16	179	19-5/16	491	16-9/16	421	18-3/4	476	36.0	16
67-114S-2	6-1/4	159	7-1/16	179	19-5/16	491	16-9/16	421	18-3/4	476	36.0	16
67-115S-1-1/2	6-1/4	159	7-1/16	179	19-5/16	491	16-9/16	421	18-3/4	476	36.0	16
67-115S-2	6-1/4	159	7-1/16	179	19-5/16	491	16-9/16	421	18-3/4	476	36.0	16
78-126S-3	7-7/8	200	7-1/16	179	19-3/4	502	19-9/16	497	21	533	45.2	20
78-136S-5	7-7/8	200	7-1/16	179	20-3/4	527	19-9/16	497	21	533	46.0	21

Filters For Air Heat Burners



Blower Size	Use On Burner Size	Filter Cat. No.	Assy. No.	Dimensions										
				A		B		C		D		E	F	
				Inches	mm	Inches	mm	Inches	mm	Inches	mm		Inches	mm
54-54 S	40 Thru 120	2 AHF	109861	5-1/2	140	12	305	8-3/16	208	5/8	16	3	6	152
65-84 S	160 Thru 320	3 AHF	109862	8	203	14	356	6-3/16	157	3-1/2	89	5	8-1/2	216
66-94 S	360 Thru 480	4 AHF	109863	9-1/2	241	22	559	6-3/16	157	2-3/4	70	6	10-1/2	267
67-115 S	520 Thru 800	5 AHF	109864	11-5/8	295	32	812	6-3/16	157	1-7/16	37	6	12-1/8	308

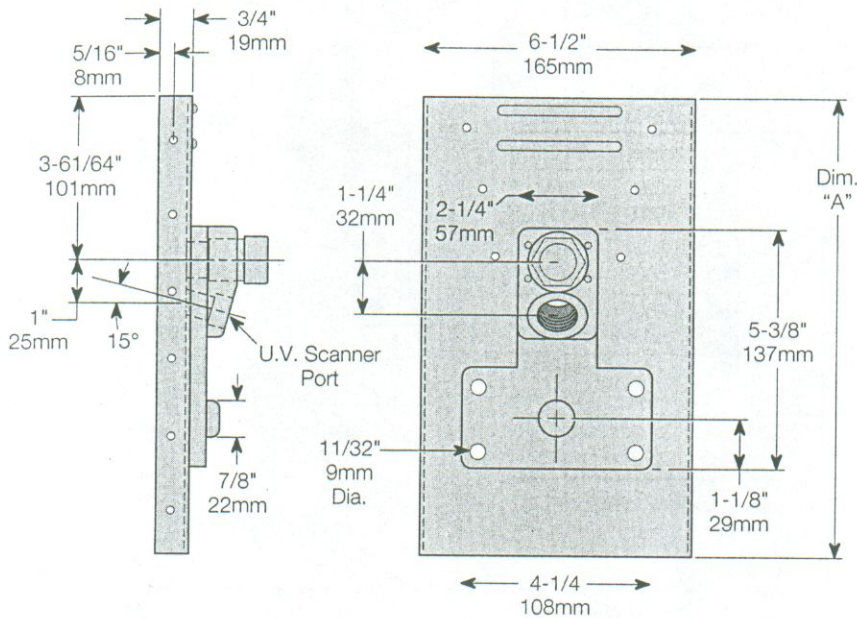


ECLIPSE COMBUSTION

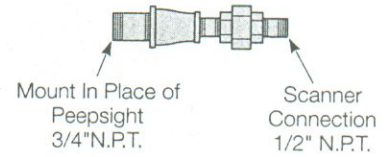
U.V. Scanner Mounting Accessories

Bracket/End Plate Assembly

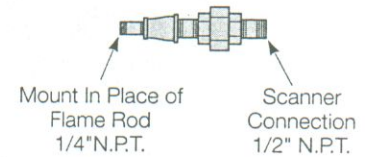
For main flame supervision at point other than pilot location. Can be mounted opposite pilot on line burner section or at any end or corner of a tee section.



Scanner Adaptor 109000 For Sizes thru 400 AH

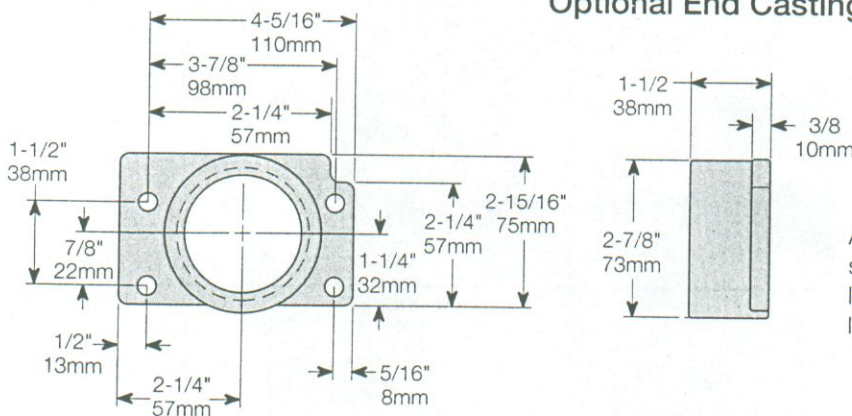


Scanner Adaptor 109559 For Sizes 440 thru 800 AH



Air Heat Burner Size & Type	Scanner Size (" N.P.T.)	End Plate Assy. No.	Dimension "A"	
			Inches	mm
40 thru 120 AH	1/2 3/4	109217 109224	10-9/16	268
280 thru 320 TAH, 160 CAH 160 thru 320 AH	1/2 3/4	109218 109225	12-5/16	313
360 AH	1/2 3/4	109219 109226	14-1/16	357
400 thru 640 AH	1/2 3/4	109220 109227	15-3/16	386
440 thru 640 DAH	1/2 3/4	109221 109228	17-13/16	452
360 thru 720 TAH 680, 720 & 800 AH	1/2 3/4	109222 109229	18-13/16	478

Optional End Casting



Auxiliary 2" N.P.T. gas inlet. No pilot or flame sensor provisions. Provides additional gas inlets necessary for systems with more than 10 lineal feet of burner.



ECLIPSE COMBUSTION



Offered By:

Power Equipment Company
2011 Williamsburg Road
Richmond, Virginia 23231
Phone (804) 236-3800
Fax (804) 236-3882

www.peconet.com